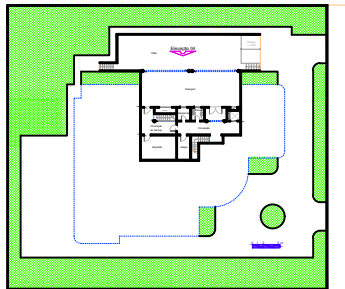
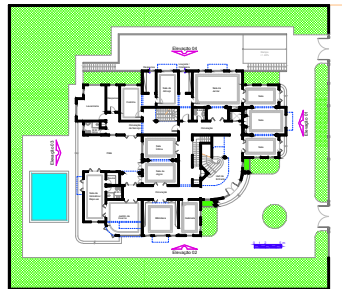


Implantação e Cobertura

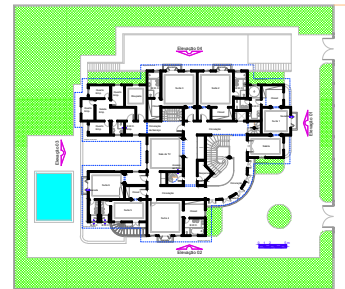


Subsolo  
A = 163,94 m<sup>2</sup>

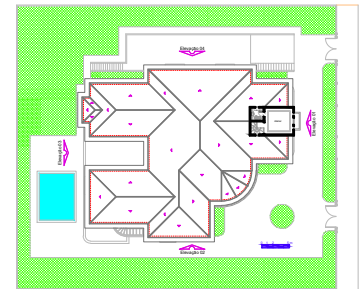


Térreo  
A = 487,30 m<sup>2</sup>

Área Total = 1133,14 m<sup>2</sup>



Superior  
A = 464,90 m<sup>2</sup>



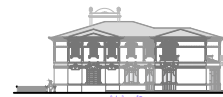
Sótão  
A = 25,31 m<sup>2</sup>



Elevação 01



Elevação 02



Elevação 03



Elevação 04